

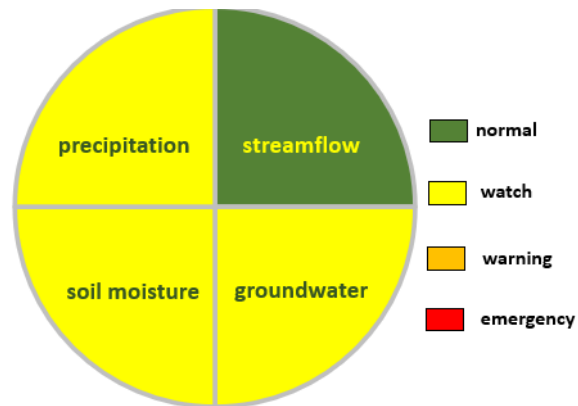
Water Watch Report
1/13/2026
Arthur Baehr artbaehr@comcast.net

Precipitation - Is in watch status.

Groundwater - Is in watch status.

Streamflow - Is in normal status.

1/13/2026



Archived reports are available upon request.

Check out our hydrology school for background reading: <https://www.bntgmc.org/>

Other drought reports:

Bucks County

<https://www.drought.gov/states/pennsylvania/county/Bucks>

USGS drought monitor website for Pennsylvania

<https://pa.water.usgs.gov/apps/drought/>

USDA / NOAA drought monitor websites:

Pennsylvania

<https://droughtmonitor.unl.edu/CurrentMap/StateDroughtMonitor.aspx?PA>

North East US

<https://droughtmonitor.unl.edu/CurrentMap/StateDroughtMonitor.aspx?Northeast>

Continental US

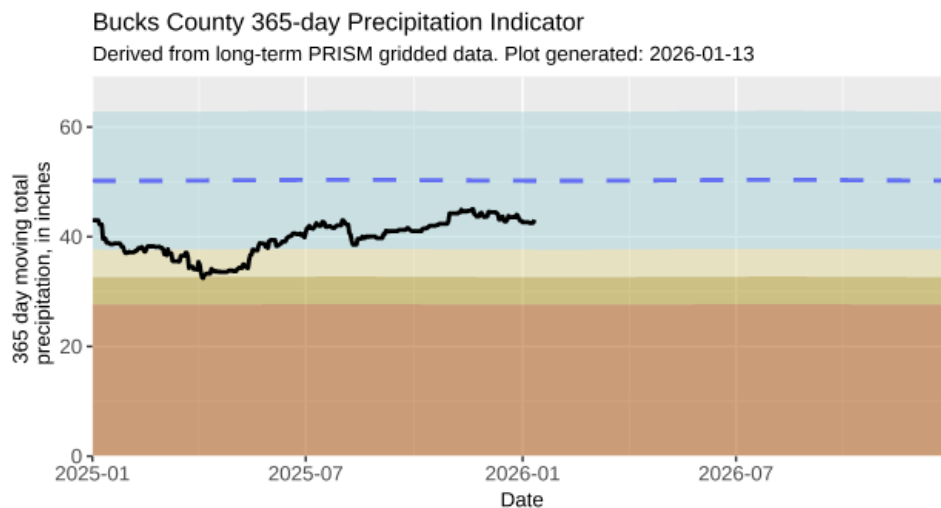
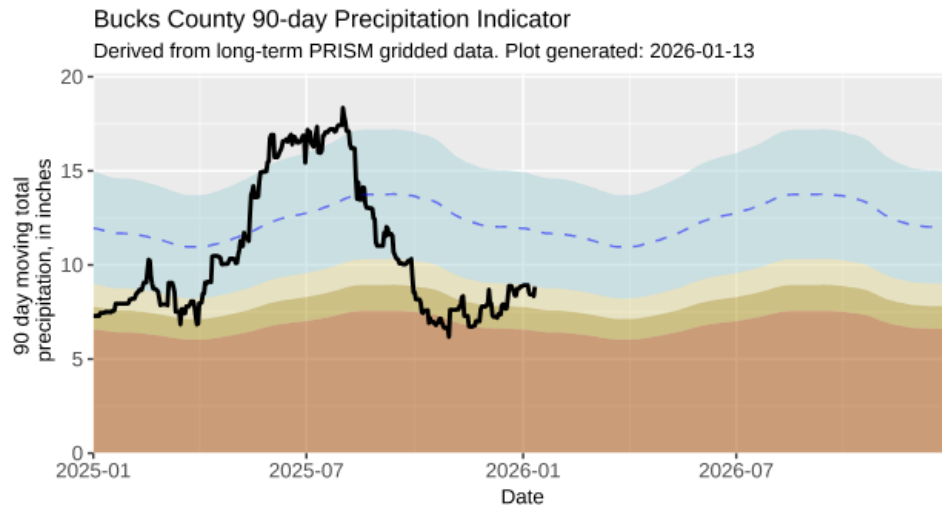
<https://droughtmonitor.unl.edu/CurrentMap.aspx>

PA DEP

<https://www.pa.gov/agencies/dep/programs-and-services/water/bureau-of-safe-drinking-water/interstate-water-resources-management-division/drought-information>

Precipitation

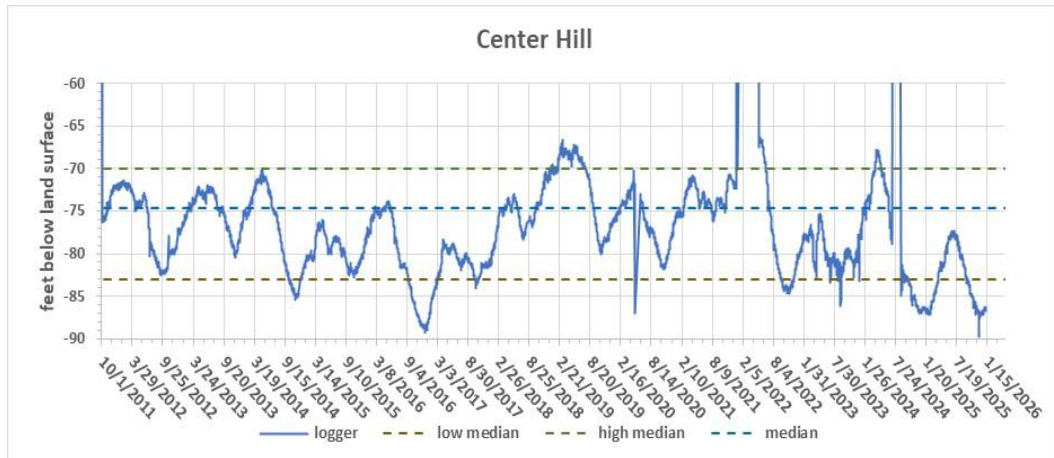
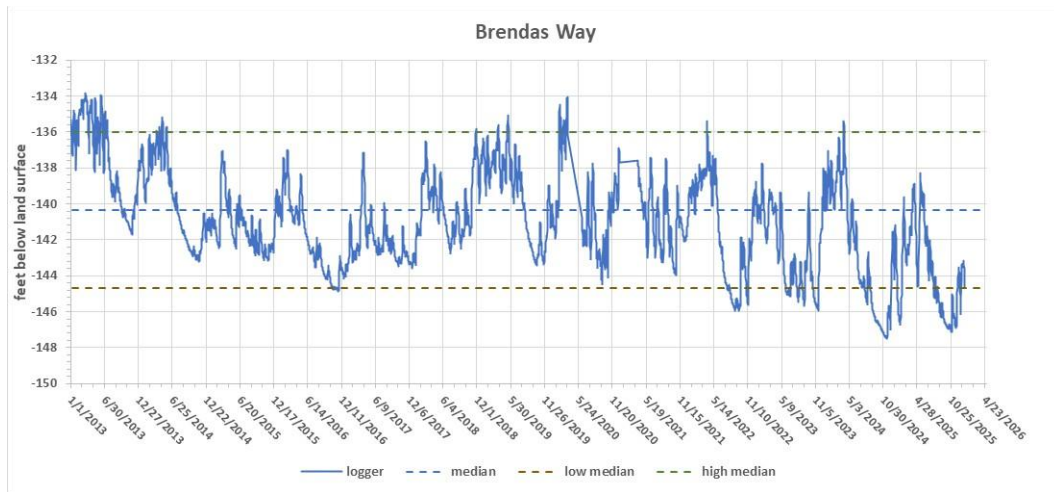
The 90-day Precipitation Indicator is in watch status. Over the past 90 days, 8.4 inches. of precipitation fell over Bucks County which is just within the watch range (average is 12.3 inches). Over the past 365 days, 43.1 inches fell over Bucks County which is within the normal range (average is 50.1 inches). Winter precipitation is most effective for inducing recharge.

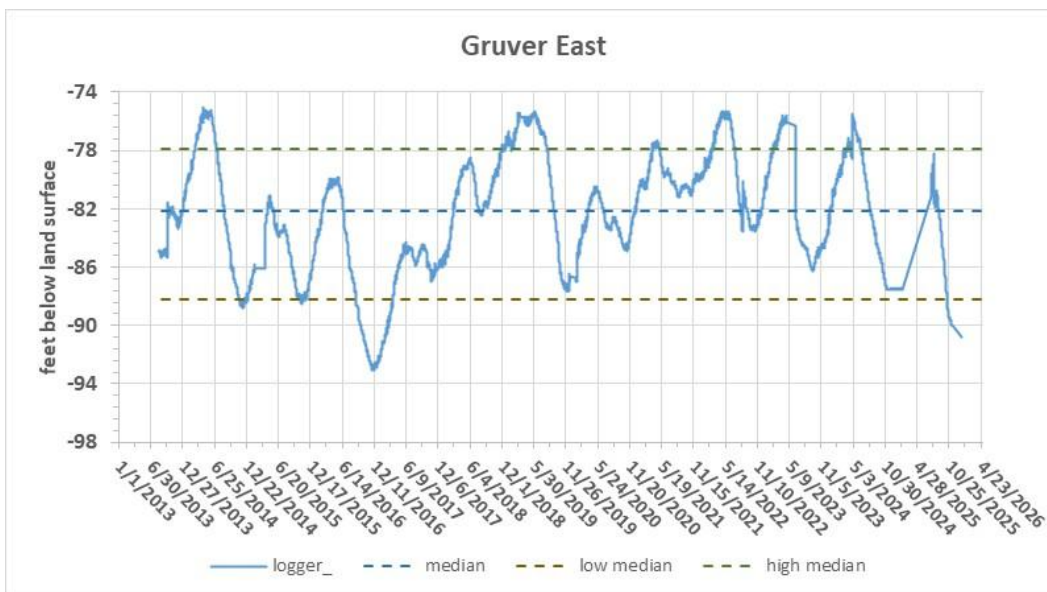
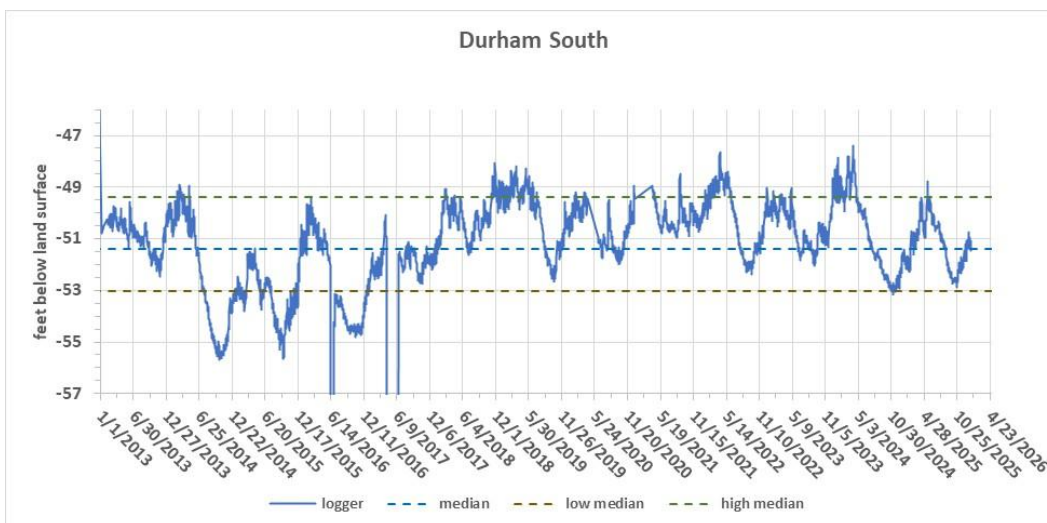
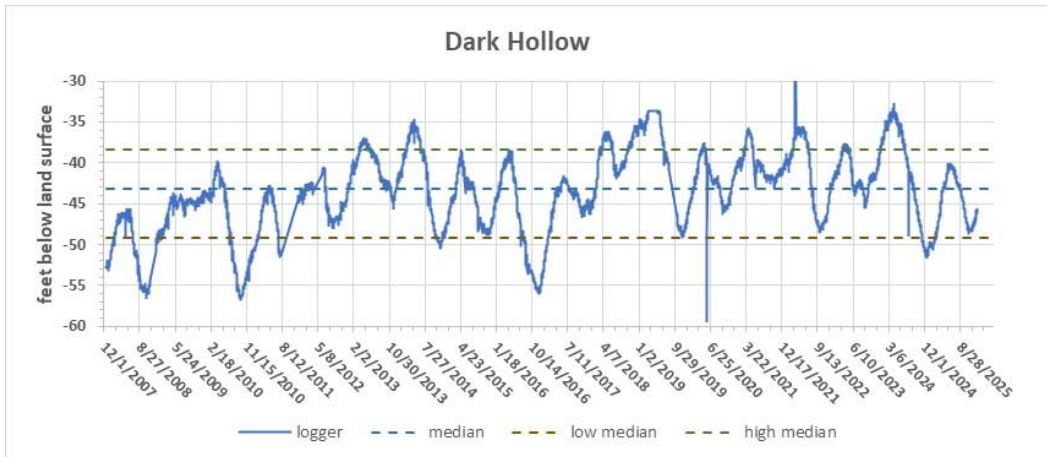


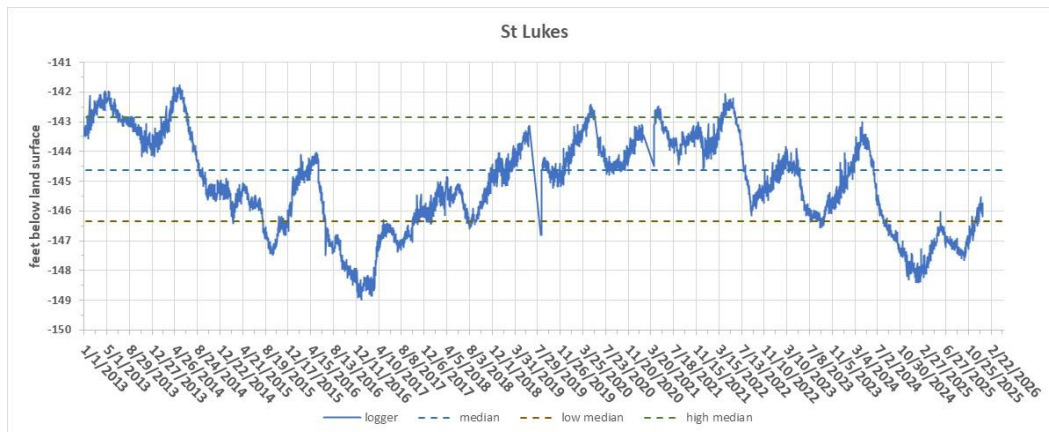
https://rconnect.usgs.gov/PA_drought_map/

Groundwater

Local water levels are available through 1/8/2026 due to the recent download of the CMN network. Although water levels are rising from seasonal lows, the watch category was assigned because 4 of 6 CMN wells had seasonal low water levels below the historical median low value. The water level at USGS well 1020 is also in watch status. Categories for well 1020 are based on a record dating back to 1975.

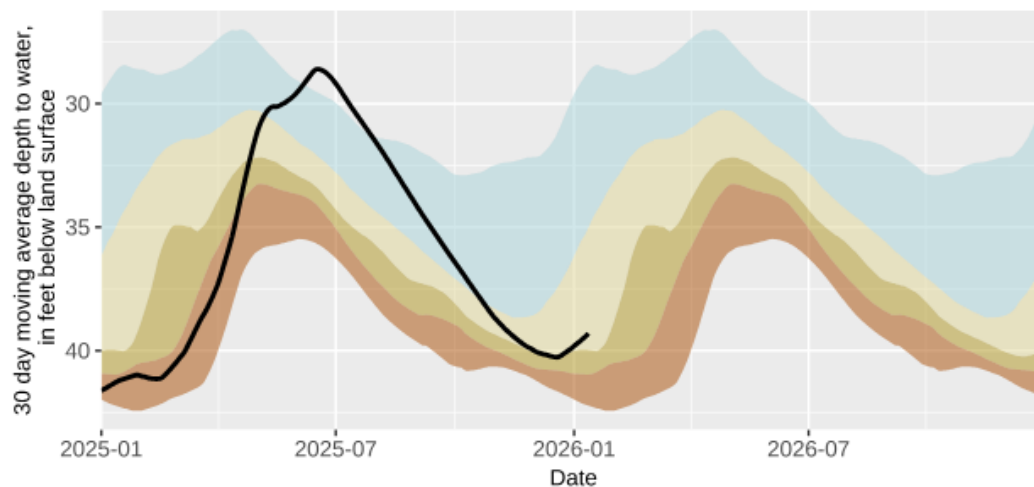






401157075032001 - BK 1020 Bucks County Observation Well

Provisional data, subject to revision. Plot generated: 2026-01-13



https://waterdata.usgs.gov/pa/nwis/dv?referred_module=gw&county_cd=42017&format=station_list&group_key=NONE&range_selection=days&period=365&begin_date=2024-12-27&end_date=2025-12-26&date_format=YYYY-MM-DD&rdb_compression=file&list_of_search_criteria=county_cd

Streamflow

The average flow over 30 days (12/14/2025 to 1/12/2026 on the Tohickon Creek @ Pipersville was 107.0 cfs. The average flow for the same 30 days from 1974 to 2025 is 98.6 cfs. Note from 11/1 to 11/2 there was a fall release from Nockamixon Dam.

